

**Man & Machine, Inc.
Cool Series BlackBerry™ Keyboard**

CoolMIR

User and Installation Manual



CONTENTS

1. Before starting the Installation	Page 3
2. Installation Instructions	Page 4
3. Setup for BlackBerry Enterprise Server (BES) 4.0 and 4.1.....	Page 10
4. Troubleshooting Your CoolMIR	Page 14
5. Care Instructions	Page 15
6. Technical Specifications	Page 15
7. CoolMIR Application Icons.....	Page 16
8. CoolMIR Symbols and European Key Combinations	Page 16
9. FCC Statement	Page 17

1. Before Starting the Installation

1.1. Important notifications

- You will need to download software to your Blackberry in order to use the CoolMIR keyboard.
- For BlackBerry Enterprise Server (BES) Users:
 - **IF YOUR BLACKBERRY IS CONNECTED TO A BLACKBERRY ENTERPRISE SERVER (BES), THE BES ADMINISTRATOR HAS TO SETUP A SOFTWARE CONFIGURATION POLICY ON THE BES FOR THE COOLMIR SOFTWARE.**
 - **The BES must be 4.0 or higher.**
- Tested BlackBerrys:
 - Please refer to <http://man-machine.com/coolmir.htm> for up-to-date list of supported BlackBerrys.
- **Not compatible with:**
 - BlackBerry™ **5790, 6710, 6720 and 6750.**
- **PLEASE CHARGE THE COOLMIR KEYBOARD BATTERY FOR AT LEAST TWO HOURS BEFORE USE.**
- **MAKE SURE THE COOLMIR SOFTWARE IS LOADED ON YOUR BLACKBERRY AND THE SOFTWARE IS TURNED ON BEFORE YOU CONNECT THE KEYBOARD.**
- **DO NOT FOLD YOUR KEYBOARD.**

1.2. Charging the CoolMIR keyboard battery

- CoolMIR uses the same charger cable as the BlackBerry™.
- Plug the USB cable B-mini connector to the Mini USB Input Port on the CoolMIR (see Figure 12).
- Plug the A connector of the USB cable to your PC or AC adaptor.
- Turn on your keyboard. If a red light turns on, your keyboard is charging.
- **CHARGE THE COOLMIR KEYBOARD BATTERY FOR AT LEAST TWO HOURS BEFORE USE.**
- If your keyboard light is green, your battery is charged over 20%.
- If your keyboard light is yellow, your battery is charged less than 20%.

Notes:

- The keyboard can be used while it is charging if the charger cable is connected to an AC adaptor.
- The CoolMIR will have 15 hours continuous usable battery life when it is fully charged.
- Press and Hold the "ON/OFF button" for one second to turn CoolMIR keyboard on and for three seconds to turn it off. The keyboard turns itself off to save battery power if it is unused for more than three minutes.

2. Installation Instructions

2.1. For BlackBerry Enterprise Server (BES) Users and Handheld Software Version 4.1 and lower

1. Third party applications are restricted from use of certain low-level application interface programs because of the high security features of the BlackBerry handheld. Therefore to enable the CoolMIR keyboard software on a BlackBerry that is activated by BES, the BES administrator has to setup a software configuration policy for the CoolMIR software.

Note to the BES administrator: Go to www.man-machine.com/coolmir.htm and download the latest CoolMIR driver. Unzip the file and save it on your computer. Refer to the "Setup for BlackBerry Enterprise Server (BES) 4.0 and 4.1" instruction on page 9-12 to create the required software configuration and push the software to the specific BlackBerry handheld wirelessly.

2. The CoolMIR icon (CM3) will show up on your BlackBerry home screen when BES administrator pushes the software to your BlackBerry handheld from the BES server wirelessly.
3. If your BlackBerry is running operating system 4.1 and higher, you need to perform the following additional steps. If not, go to step 4.

On the BlackBerry handheld go to:

- **Settings, Options on the BlackBerry**, then choose **Advanced Options**.
 - Next select **Applications**.
 - Click to select the **CoolMIR** keyboard.
 - Click the roller and choose **Edit Permissions**.
 - Scroll to the middle section of permissions, called **Interactions**.
 - Click the roller and choose **Expand** to expand the listing.
 - Highlight **Keystroke Injection** and click the roller.
 - Change the option from Deny to **Allow**.
- Note:** If you are not able to change this option to Allow, it means that the software configuration policy change has not taken place yet on the BES server.
- Click the roller once again and choose **Save**.
 - Continue to press the Escape key to exit the application.
 - Reboot the BlackBerry by removing the battery for a few seconds for the change to be completed.

4. To turn the CoolMIR software on, select the icon for the CoolMIR software using the roller, then click. The CoolMIR page will come up. Click the roller and select "Turn On" from the menu then click the roller to turn the software on. **It should say "CoolMIR ON" on the test screen before you plug the keyboard to the handheld** (Figure 7, 8, 9, 10 and 11).
5. Plug the CoolMIR keyboard Mini USB cable into your handheld and turn the keyboard on by pressing the button on the left bottom of the keyboard. You will see a green light on the keyboard when the keyboard is on (Figure 12).

Note: Since the CoolMIR keyboard does not charge the BlackBerry, when the keyboard is connected to BlackBerry with OS version 4.1 and higher, it shows the "USB charging current is not sufficient. Verify that your handheld is connected to a powered USB charging source and that the proper USB driver is installed" pop-up screen. Press the Escape button to exit from this screen.

6. If your BlackBerry is password protected, the green light on the keyboard blinks and a screen pops up on the BlackBerry asking for your password. Type your BlackBerry password using the BlackBerry built in keyboard and press enter.
7. Press the Enter key on the keyboard to complete the authentication process. The blinking green light should turn in to a steady green.
8. You can now use your CoolMIR keyboard.

2.2. For All Handheld Software Version 4.2.1 and higher and BES 4.1 and higher

There are two methods for installing the CoolMIR software:

- Download over the air (OTA).
- Download via a cable using your BlackBerry's Desktop Manager.

2.2.1. Download over the air (OTA)

- From your BlackBerry "Home" screen, select your "Internet Browser" or "BlackBerry Browser".
- Go to www.man-machine.com/ota.htm.
- Choose the right driver based on your handheld software version and select "Get Link".
- Follow the instruction on the BlackBerry to download the software.
- Go to the main BlackBerry screen, locate the CM icon and click it.
- Click View to save the keystroke injection change that is required for the keyboard to work.
- Press the BlackBerry menu key (key is on the left side of the trackball) and click save
- Then follow step 2.2.2.4 to enable the software on your BlackBerry.

2.2.2. Download via a cable using your BlackBerry's Desktop Manager.

2.2.2.1. Prepare your PC and Blackberry

- Make sure your BlackBerry software and the BlackBerry Desktop Manager is loaded on your PC.
- Save any important information from the handheld to the PC using the Backup and Restore tool. (Open the Desktop Manager. Connect your handheld to your PC. Double-click "Backup and Restore" in the Desktop Manager. To backup everything on your handheld, click the "Backup" button. In the "Select File for Full Backup" window, select the name and location of the file as desired and click "Save".)
- Go to www.man-machine.com/coolmir.htm and download the latest CoolMIR driver and the user manual. Unzip the file and save it on your computer.

2.2.2.2. Load the Software using the Desktop Manager onto your Blackberry

- In the Desktop Manager, double-click "Application Loader".



Figure 1. Blackberry Desktop Manager.

- The “Welcome to Application Wizard” window appears.



Figure 2. Welcome to the Application Loader Wizard Window.

- Click “Next” to start the process of loading new software onto your handheld. A “Retrieving Handheld Configuration” window appears on your PC to indicate that the Application Loader is connecting to your handheld and is reading your handheld’s configuration.
- Wait until initialization is complete and the dialog box disappears. The “Handheld Application Selection” window appears, displaying the applications that you can choose to download to your handheld.

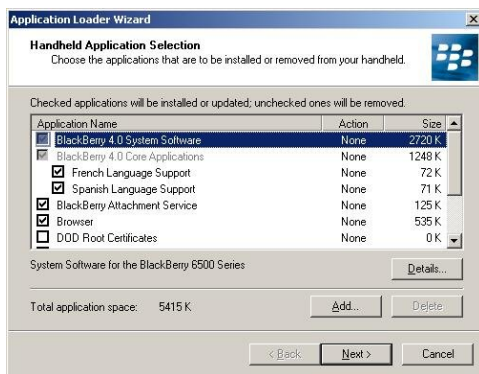


Figure 3. Handheld Application Selection Window.

- Click on the “ADD” button.
- Drop down the “LOOK IN BOX” and select the folder where the CoolMIR program is located and Double-click on the file “CoolMIR.ALX”.

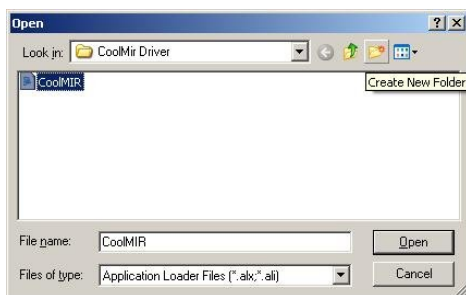


Figure 4. Open Window.

- Select the check boxes next to the names of the applications you want to load.
- **Any applications that do not have a checkmark beside them will be erased from the handheld (even if you have them currently loaded).**
- Click “Next”.

- The “Completing The Application Loader Wizard” window appears, displaying the application that will be downloaded to your handheld. Verify that the information is correct and click “Finish”.



Figure 5. Completing the Application Loader Wizard Window.

- The “Load Progress” dialog box appears and the new files are added to your handheld.
- When loading is complete, the “Loading Operation Was Successful” box will indicate whether loading was successful. Click “Close” to return to the Desktop Manager.
- If loading was not successful, make sure that your handheld is in the cradle and the cradle is connected to your PC properly. Then, repeat the above steps.

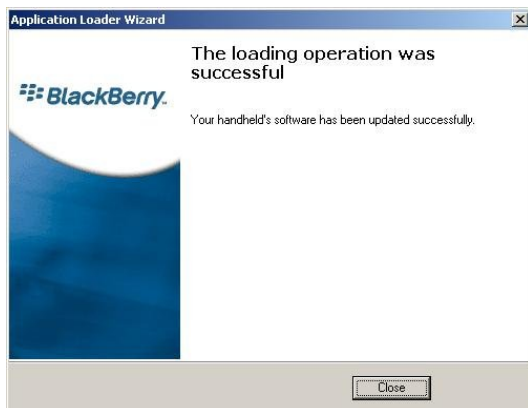


Figure 6. The Loading Operation was successful Window.

2.2.2.3. Allow Keystroke Injection if your BlackBerry is running operating system 4.1 and higher. If not, skip to step 2.2.4.

- Go to Settings, Options on the BlackBerry, then choose Advanced options.
- Next select **Applications**.
- Click to select the **CoolMIR** keyboard.
- Click the roller and choose **Edit Permissions**.
- Scroll to the middle section of permissions, called **Interactions**.
- Click the roller and choose **Expand** to expand the listing.
- Highlight **Keystroke Injection** and click the roller.

- Change the option from Deny to **Allow**.
Note: If you are not able to change this option to Allow, it means that the software configuration policy change has not taken place yet on the BES server.
- Click the roller once again and choose **Save**.
- Continue to press the Cancel key to exit the application.
- Reboot the BlackBerry by removing the battery for a few seconds for the change to be completed.

2.2.2.4. Enable the CoolMIR software on your Blackberry

- Go to your Blackberry and unplug the Mini USB cable from the handheld.
- On the Blackberry homepage, select the icon for the CoolMIR driver using the roller then click.



Figure 7. BlackBerry Home Page.

- The CoolMIR page will come up.



Figure 8. CoolMIR Home Page.

- Click the roller and select "Turn On" from the menu then click the roller to turn on the software.



Figure 9. CoolMIR Menu.

- Plug the CoolMIR keyboard Mini USB cable into your handheld and turn the keyboard on by pressing the button on the left bottom of the keyboard. You will see a green light on the keyboard when the keyboard is turned on.
- If your BlackBerry is password protected, the green light on the keyboard blinks and a screen pops up on the BlackBerry asking for your password. Type your BlackBerry password and press enter using the BlackBerry built in keyboard.

- Press the Enter key on the keyboard to complete the authentication process. The blinking green light should turn in to a steady green.



Figure 10. CoolMIR When the Software is On.

- You can now use your CoolMIR keyboard.



Figure 11. CoolMIR In Use.



Figure 12. CoolMIR ON and OFF Button and Mini USB Input Port Location.

For technical support and questions: techsupport@mmimd.com
Visit www.man-machine.com/coolmir for software updates.

3. Setup for BlackBerry Enterprise Server (BES) 4.0 and 4.1 (For BES administrator)

Third party applications are restricted from use of certain low-level application interface programs because of the high security features of the BlackBerry handheld. Therefore to enable the CoolMIR keyboard driver on a BlackBerry that is activated by BlackBerry Enterprise Server (BES), the BES administrator should perform the following.

Notes to the BES administrator:

- Research In Motion (RIM) BlackBerry requires a third party application that uses Controlled APIs such as Event Injector API to be given permission by the BES administrator.
- This Controlled API must be signed with a key, or signature, provided by RIM before the application .cod files can be loaded onto the BlackBerry Wireless Handheld. The CoolMIR driver uses this Event Injector API and is signed by RIM BlackBerry.
- Man& Machine, Inc. is a BlackBerry Alliance Member. You can verify this by going to <https://www.blackberry.com/ThirdParty/searchProduct.jsp?compID=1000813&productID=1028441>
- If you have any question or concern you can contact us using techsupport@mmimd.com or (301) 341-4900.

3.1. Setup third-party application and create software index

- Create an **applications** folder in **Program Files\Common Files\Research In Motion\Shared**
- Create a subfolder called **CoolMIR** under the **Program Files\Common Files\Research In Motion\Shared\applications** directory. Copy the handheld installation files (CoolMIR.ALX & CoolMIR.COD) files to this directory.
- **Index the applications** by specifying the loader /index command from the command prompt.
 - Go to Start, click Run, type cmd and click ok.
 - Change the directory by typing cd C:\Program Files\Common Files\Research In Motion\Apploder
 - Type the command: Loader.exe /Index

3.2. Share the network drive

- Share <drive:>\Program Files\Common Files\Research In Motion.
- Set the permission attributes to Read-only.

3.3. Create a software configuration for the CoolMIR software

For BES 4.0 users

- Open the **BlackBerry Handheld Configuration Tool**.
- Click **Software Configurations** tab.
- Click **Add New Configuration**.
- Follow the instruction below 4.1.

For BES 4.1 users

- In the **BlackBerry Manager**, in the left pane, click **BlackBerry Domain**.
- On the **Software Configurations** tab, click **Add New Configuration**.

- Fill out the Handheld Software Configuration Screen.
 - Enter a name for the new configuration.
 - Optionally fill in a configuration description.
 - Enter the Handheld Software Location in standard UNC format:
 - You could use something like: `\\localhost\Research In Motion` (if the files are installed locally on the server).
 - You can press the “Change” button to browse to the location of the files.
 - If you use this “browse” method, be sure to point to “My Network Places,” then Entire Network, drill down to the shared `\\Program Files\Common Files\Research In Motion`.
 - Click **OK**.

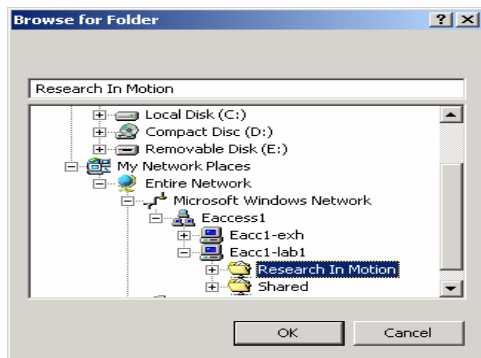


Figure 13. Research In Motion Folder Directory.

- As shown on the next page, expand **Application Software**, and check the box in front of to the CoolMIR application.
- Change the **Delivery** column to **Wireless**.

3.4. Assign a software configuration to a user account

For BES 4.0 users

- In the **Handheld Configuration Tool**, in the left pane, click **Handhelds**.
- In the User Name list, click the user account to assign the software configuration to.
- Click **Assign Software Configuration**.
- Click the software configuration to assign.
- Click **OK**.

For BES 4.1 users

- In the **BlackBerry Manager**, in the left pane, click **BlackBerry Domain**.
- In the left pane, click a **BlackBerry Enterprise Server**.
- In the Name list, click the user account to assign the software configuration to.
- In the lower pane, click **Device Management**.
- Click **Assign Software Configuration**.
- Click the software configuration to assign.
- Click **OK**.

3.5. Sending the CoolMIR application to BlackBerry devices wirelessly

You can wirelessly send the CoolMIR software to BlackBerry devices with 16 MB of flash memory that are running device software version 4.0 or later. The wireless download to BlackBerry devices can take up to 4 hours to complete.

When an application control policy is changed, the application control policy is reset automatically to the handheld wirelessly as long as the delivery option in step 3 is set to **Wireless**.

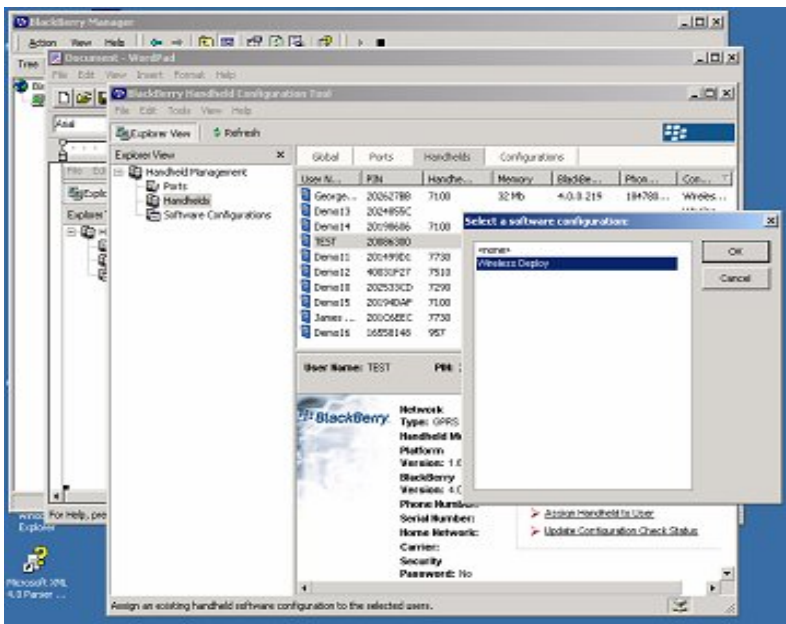


Figure 16. Handheld Configuration Tool.

4. Troubleshooting Your CoolMIR

1. CoolMIR green light is on but nothing shows up when I type.
 - Check to see if your CoolMIR software is loaded. If not follow the Installation Instructions.
 - Make sure your software is turned on as shown in Step 2.2.2.4 of the Installation Instructions.
 - Make sure CoolMIR Mini USB cable is connected to the BlackBerry.
 - If you still have a problem, turn off the CoolMIR keyboard and turn it back on.
2. I can't turn CoolMIR keyboard on.
 - Make sure your CoolMIR battery is charged. To charge the keyboard, plug the Mini USB charger cable and turn the CoolMIR keyboard on by pressing the ON/OFF Button for 1 second.
 - If you still have a problem, go to the back of the CoolMIR keyboard and push the "RESET" button using a thin pen. The reset button is inside a very small hole at the back of the CoolMIR keyboard on the left upper side of the right middle screw.
3. I can't turn CoolMIR keyboard off.
 - Press and hold the ON/OFF Button for 3 second.
 - If you still have a problem, go to the back of the CoolMIR keyboard and push the "RESET" button using a thin pen. The reset button is inside a very small hole at the back of the CoolMIR keyboard on the left upper side of the right middle screw.
4. When I turn the CoolMIR software on, it says, " Uncaught exception java.lang.Error " or when I click "Turn On" it does not say "CoolMIR ON" on the test screen or the menu does not change to "Turn Off" it still says "Turn On".
 - The software configuration policy change has not taken place yet on the BES server. If the BlackBerry is on BlackBerry Enterprise Server (BES), permission must be obtained from BES administrator to download the CoolMIR software. Your BES must be 4.0 or higher. For instructions on how to allow the CoolMIR driver on the BES please refer to the "Setup the BlackBerry Enterprise Server (BES)" (pages 10-13 of this User Manual). For instructions provided by RIM BlackBerry visit www.blackberry.com/knowledgecenterpublic (Search for "KB-04219").
5. When I turn the CoolMIR software on, I get, "Uncought exception: net.rim.device.api.system.ControlledAccessException error".
 - The keystroke injection API is not allowed for your device. Follow the instruction on the CoolMIR user manual page 7 to allow keystroke injection on OS version 4.1 and higher BlackBerry.
6. The green light continuously blinks when I connect the keyboard to my BlackBerry.
 - Make sure the CoolMIR software on the BlackBerry is turned on and it says "CoolMIR ON" on the CoolMIR test screen. If it does not say that the software configuration policy change has not taken place yet on the BES server.
 - If your BlackBerry is password protected, enter you password on your BlackBerry and press the enter key on the BlackBerry followed by the Enter key on the CoolMIR keyboard.
 - If it still blinks and this is the first time you are connecting the keyboard to the BlackBerry, reboot the BlackBerry by removing the battery for a few seconds.

For technical support and questions: techsupport@mmimd.com

Visit www.man-machine.com/coolmir for more FAQs.

5. Care Instructions























DO NOT FOLD THE KEYBOARD, doing so could damage the unit. When placing the CoolMIR in it's carrying case make certain to roll it loosely. The one-year warranty does not cover damage due to folding or mishandling.

The rubber of CoolMIR can be cleaned with water, soap, alcohol, 10% bleach solutions, and a variety of chemical disinfectants. **DO NOT USE PETROLEUM BASED CLEANERS OR SOLVENTS.**

6. Technical Specifications

<p>Weight: Approximately 170 g (0.4 lb.)</p> <p>Dimensions: 330 mm x 114 mm x 13 mm 13" x 4.5" x 0.5"</p> <p>Cable length: Approximately 0.3 m (12")</p> <p>Storage temperature: -20 °C - 70 °C -4 °F - 158 °F</p> <p>Operating temperature: 0 °C - 70 °C 32 °F - 158 °F</p> <p>Power: Rechargeable Battery</p> <p>Composition: 100% Silicone Rubber PVC Cable Latex free keyboard</p> <p>Number of keys: 72 U.S. layout keys with 18 shortcut keys to your favorite programs including Calendar, Search, Phone, Email, Internet, Menu, Escape, etc...</p>	<p>Typing Capacity: 100 words per minute</p> <p>Operating & System requirements: You will need to have your BlackBerry software and the BlackBerry Desktop Manager loaded on your PC. You will need to download software to your BlackBerry using the RIM Desktop Manager in order to enable the CoolMIR Keyboard.</p> <p>Permission must be obtained from the BlackBerry Enterprise Server (BES) administrator to download the CoolMIR software. Your BES must be 4.0 or higher.</p> <p>Warranty period: One year limited warranty.</p>
--	---

7. CoolMIR Application Icons

Icon	Application	Icon	Application	Keys	Application
	Home		MemoPad		<u>Roller Click</u>
	Messages		Alarm		Roller Up
	Phone		Profiles		Roller Down
	Address book		Game	 Esc	Escape
	Calendar		Calculator		
	Internet		Help		
	Compose		Search		
	Saved Messages		CoolMIR		
	Tasks		Options		

8. CoolMIR Symbols and European Key Combinations

Alt +	1	2	3	4	5	6	8	9	0	-	=
Character	§	é	£	€	«	»	Ø	Ç	ă	^	°
SYM +	Q	W	E	R	T	Y	U	I	O	P	
Character	[<	{	<<	~	=	_	"	^	%	
SYM +	A	S	D	F	G	H	J	K	L		
Character]	>	}	>>	\	;	~	"	&		
SYM +	Z	X	C	V	B	N	M				
Character	§	€	¥	£	·		§				

All specifications are subject to change without notice.
BlackBerry is a registered trademark of Research In Motion Limited.

9. Federal Communications Commission (FCC) Statement

This equipment has been tested and found to comply with the limits for a Class B digital device, pursuant to Part 15 of the FCC Rules. These limits are designed to provide reasonable protection against harmful interference in a residential installation. This equipment generates, uses, and can radiate radio frequency energy and, if not installed and used in accordance with the instructions, may cause harmful interference to radio communications. However, there is no guarantee that interference will not occur in a particular installation. If this equipment does cause harmful interference to radio or television reception, which can be determined by turning the equipment off and on, the user is encouraged to try to correct the interference by one or more of the following measures:

Reorient or relocate the receiving antenna.

Increase the separation between the equipment and receiver.

Connect the equipment into an outlet on a circuit different from that to which the receiver is connected.

Properly shielded and grounded cables and connectors must be used in order to meet FCC emission limits. Man & Machine, Inc. is not responsible for any radio or television interference caused by using other than recommended cables and connectors or by unauthorized changes or modifications to this equipment. Unauthorized changes or modifications could void the user's authority to operate the equipment.

This device complies with Part 15 of the FCC Rules. Operation is subject to the following two conditions: (1) this device may not cause harmful interference, and (2) this device must accept any interference received, including interference that may cause undesired operation.

This device complies with Part 15 of the FCC Rules. Operation is subject to the following two conditions: (1) this device may not cause harmful interference, and (2) this device must accept any interference received, including interference that may cause undesired operation.

Responsible Party:

Man & Machine, Inc

3706 West St.

Landover, MD 20785

Telephone: 1-301-341-4900

<http://www.man-machine.com/>

Copyright Man & Machine, Inc. 2005

